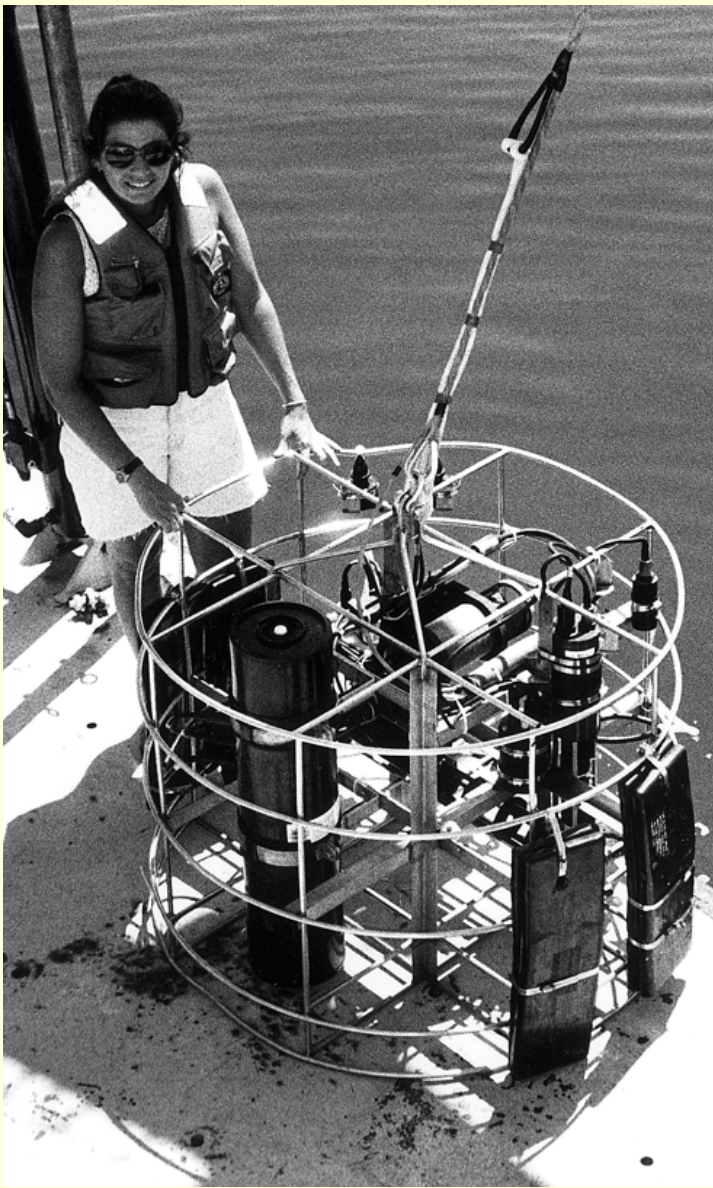
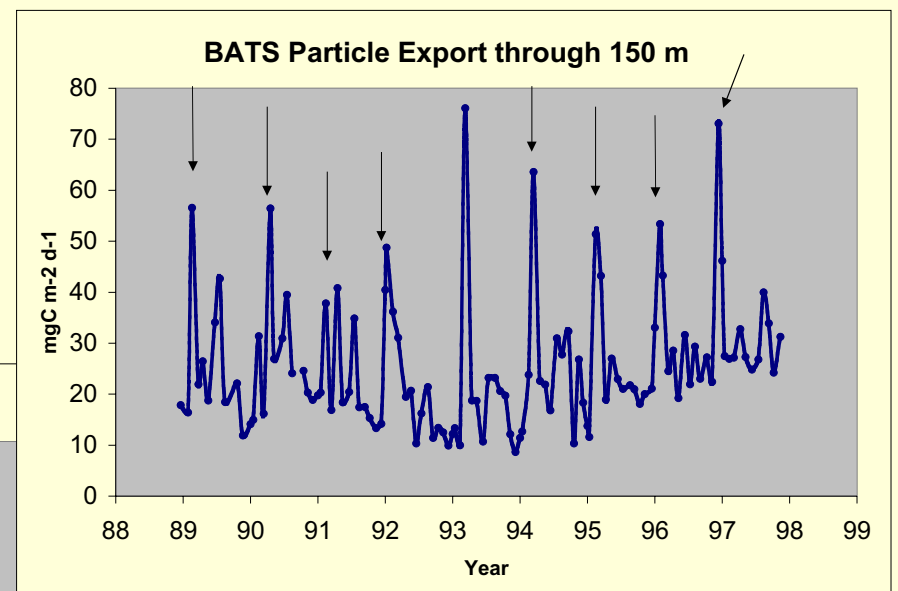
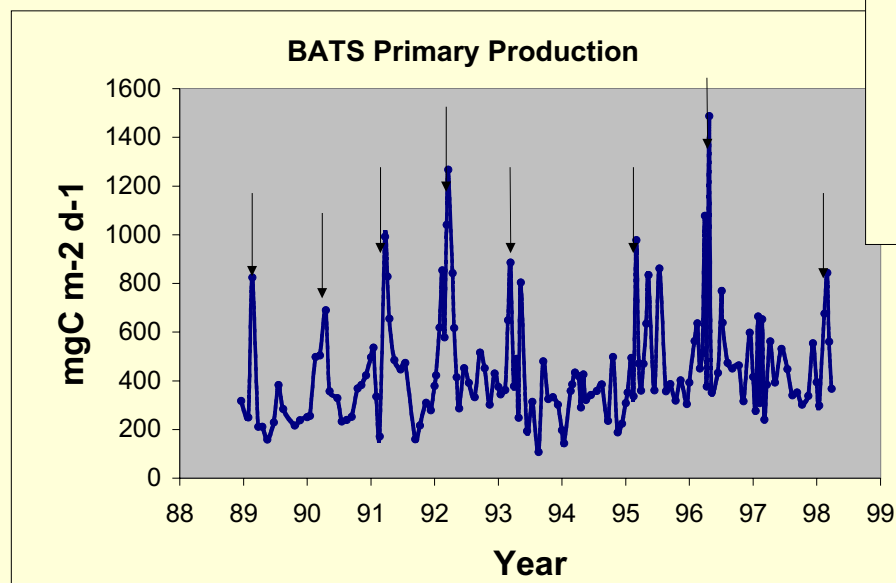


Bermuda Atlantic Time-series Study

Biogeochemical Fluxes at BATS Site. Biological processes control the exchanges between the pools of inorganic and organic carbon. Measurements of these processes are difficult and still beset by various technical and theoretical problems. Moreover, estimates of rate processes are complicated by temporal and spatial variability.



Launching a bio-optical sensor aboard R/V Weatherbird II



Here we show a ten-year time series of primary production (photosynthesis) and particle export (sedimentation) at the BATS site in the Sargasso Sea. Note the regular spring bloom of phytoplankton and the corresponding flux events (arrows). The sedimentation rate is quite a small fraction of the primary production at the BATS site.